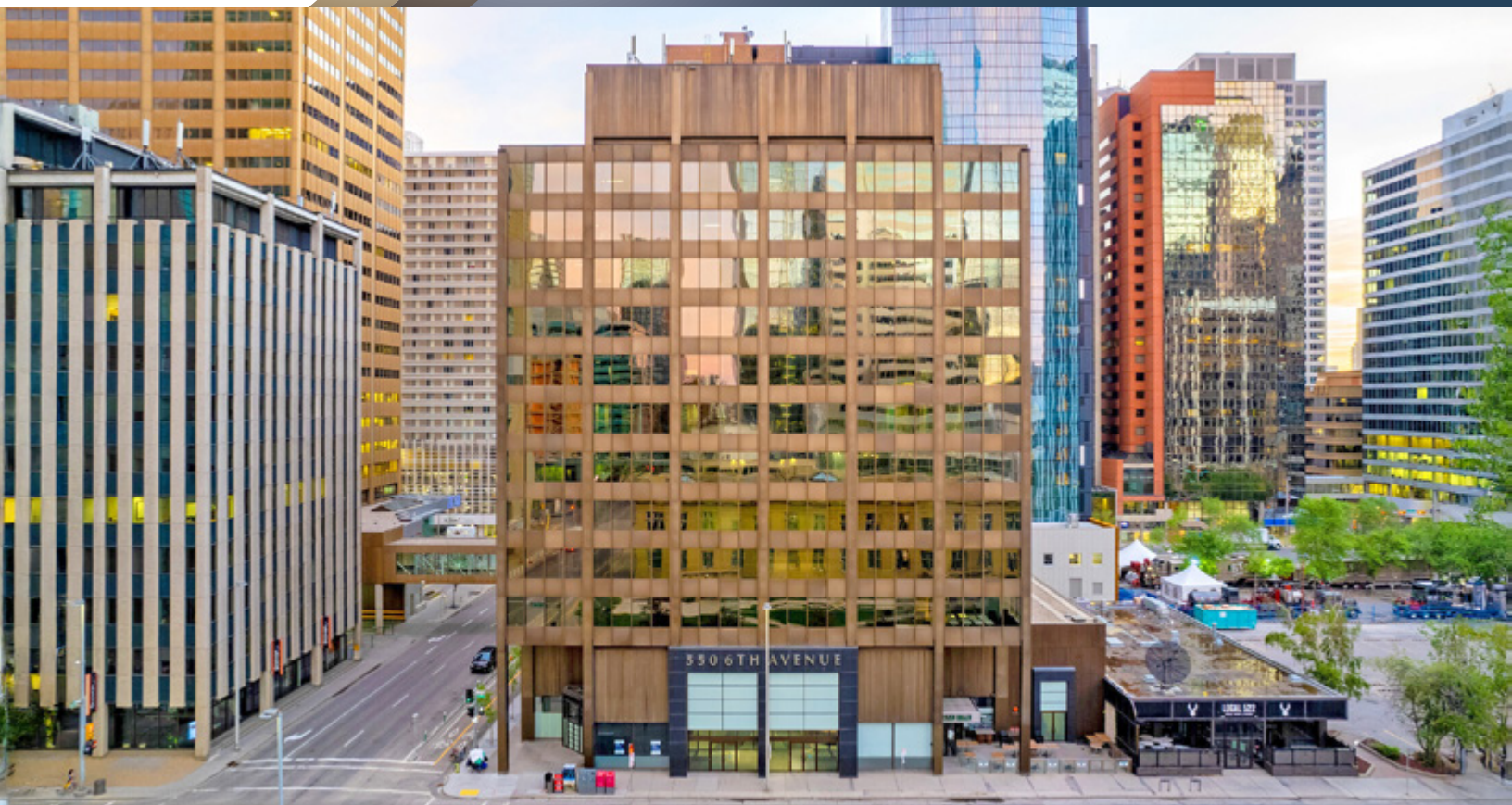


Blackstone
Commercial Real Estate Services Inc.

For Sublease

550 6th Avenue SW | Calgary, Alberta
Heart of Calgary's Business District



550 6th Avenue SW, Calgary AB

Easy access to Public Transit, Shopping & Dining

PROPERTY DETAILS

Unit Size	4 Office chalk-line Total: 867 SF
Price	Ask Associate
Availability	Immediate
Year Built	1966
Gross Rate	Market
Expiry	Negotiable

- **Short-term sublease options available** – month-to-month, 6-month, or 1-year terms
- **Newly renovated penthouse level** – office space with modern finishes
- **Fully furnished** – office furniture included for immediate move-in
- **Access to premium shared amenities:** kitchen, boardroom, employee lounge, and printing stations
- **Newly upgraded** fitness facility, conference center, and tenant lounge onsite
- **Direct Plus 15 access** to Fifth & Fifth and Petex Building
- **Exceptional downtown location** – five-minute walk to LRT, Calgary Courthouse, shopping, and dining
- **Secure, professionally managed** building in the heart of the business district



Olivia Bohdan, Associate

P 403.629.0809

E obohdan@blackstonecommercial.com

Unit A210
9705 Horton Road SW
Calgary, Alberta T2V 2X5
P 403.214.2344

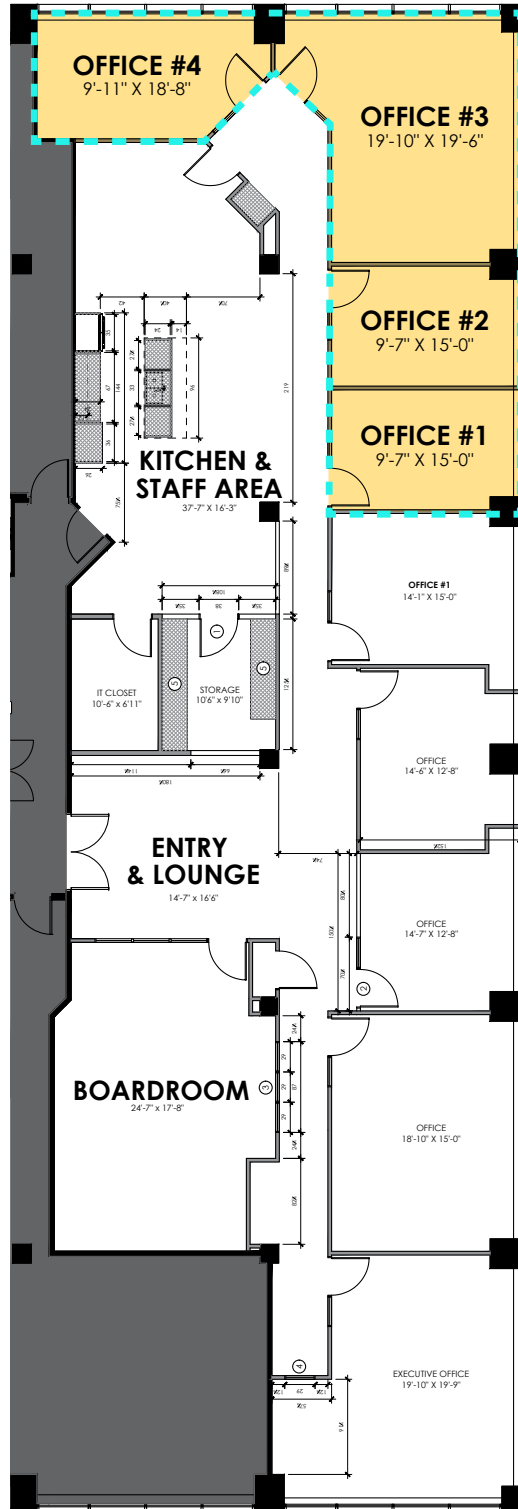
BlackstoneCommercial.com

For Sublease

550 6th Avenue SW | Calgary, Alberta
Heart of Calgary's Business District

Floor Plan

Unit 1400

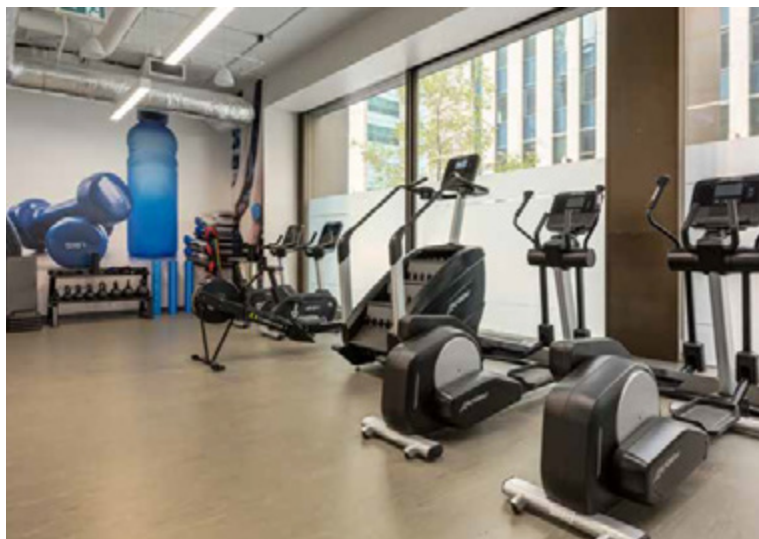




Blackstone
Commercial Real Estate Services Inc.

For Sublease

550 6th Avenue SW | Calgary, Alberta
Heart of Calgary's Business District



Olivia Bohdan, Associate

P 403.629.0809

E obohdan@blackstonecommercial.com

Unit A210
9705 Horton Road SW
Calgary, Alberta T2V 2X5
P 403.214.2344

BlackstoneCommercial.com

For Sublease

550 6th Avenue SW | Calgary, Alberta
Heart of Calgary's Business District



- | | | |
|------------------------|--------------------------------------|------------------------------|
| 1. Spicy Amigos | 7. Local 522 Public Tavern & Kitchen | 13. Starbucks |
| 2. A&W | 8. Caesar's Steak House & Lounge | 14. Major Tom Bar |
| 3. Tim Horton's | 9. Artigiano | 15. Barbarella Bar |
| 4. Gogi Korean Kitchen | 10. Owen's Landing | 16. The CORE Shopping Centre |
| 5. Ola Poke | 11. The Rooftop YYC | |
| 6. Deville Coffee | 12. OEB Breakfast Co. | |



BlackstoneCommercial.com

For more information, please contact one of our associates.

This document has been prepared by Blackstone Commercial for advertising and general information only. Although information has been obtained from sources deemed reliable, Blackstone Commercial and / or their representatives, brokers or agents make no guarantees, representations or warranties of any kind, expressed or implied, regarding the information including, but not limited to, warranties of content, accuracy and reliability. Blackstone Commercial excludes unequivocally all inferred or implied terms, conditions and warranties arising out of this document and excludes all liability for loss and damages arising there from. © 2025. All rights reserved. This document is the copyrighted property of Blackstone Commercial.



NEIGHBORHOOD
Downtown



POPULATION
129,508



MEDIAN AGE
37.9



HOUSEHOLD INCOME
\$77,618



TRAFFIC COUNT
19,000 VPD | 6th Avenue & 5th Street
19,000 VPD | 6th Avenue & 4th Street

Olivia Bohdan, Associate

P 403.629.0809

E obohdan@blackstonecommercial.com

Unit A210
9705 Horton Road SW
Calgary, Alberta T2V 2X5
P 403.214.2344

BlackstoneCommercial.com