

# For Lease

5147 20th Avenue SE | Calgary, AB



## Demographics *(within 3 km)*



NEIGHBORHOOD  
Forest Lawn



POPULATION  
69,990



MEDIAN AGE  
40



HOUSEHOLD INCOME  
\$66,073

## Building Details



PARKING  
Ample Stalls



YEAR BUILT  
1979



TRAFFIC COUNT

21,000 VPD | 52 St. SE & 20 Ave. SE  
26,000 VPD | 17 Ave. SE & 47 Ave. W



Unit A210, 9705 Horton Road SW,  
Calgary, Alberta, T2V 2X5

P (403) 214-2344

[blackstonecommercial.com](http://blackstonecommercial.com)

## Plaza 5200

### Property Details

**Size Available:** Unit 9 & 10: 4,600± SF

**Availability:** Immediately

**Net Rate:** Market

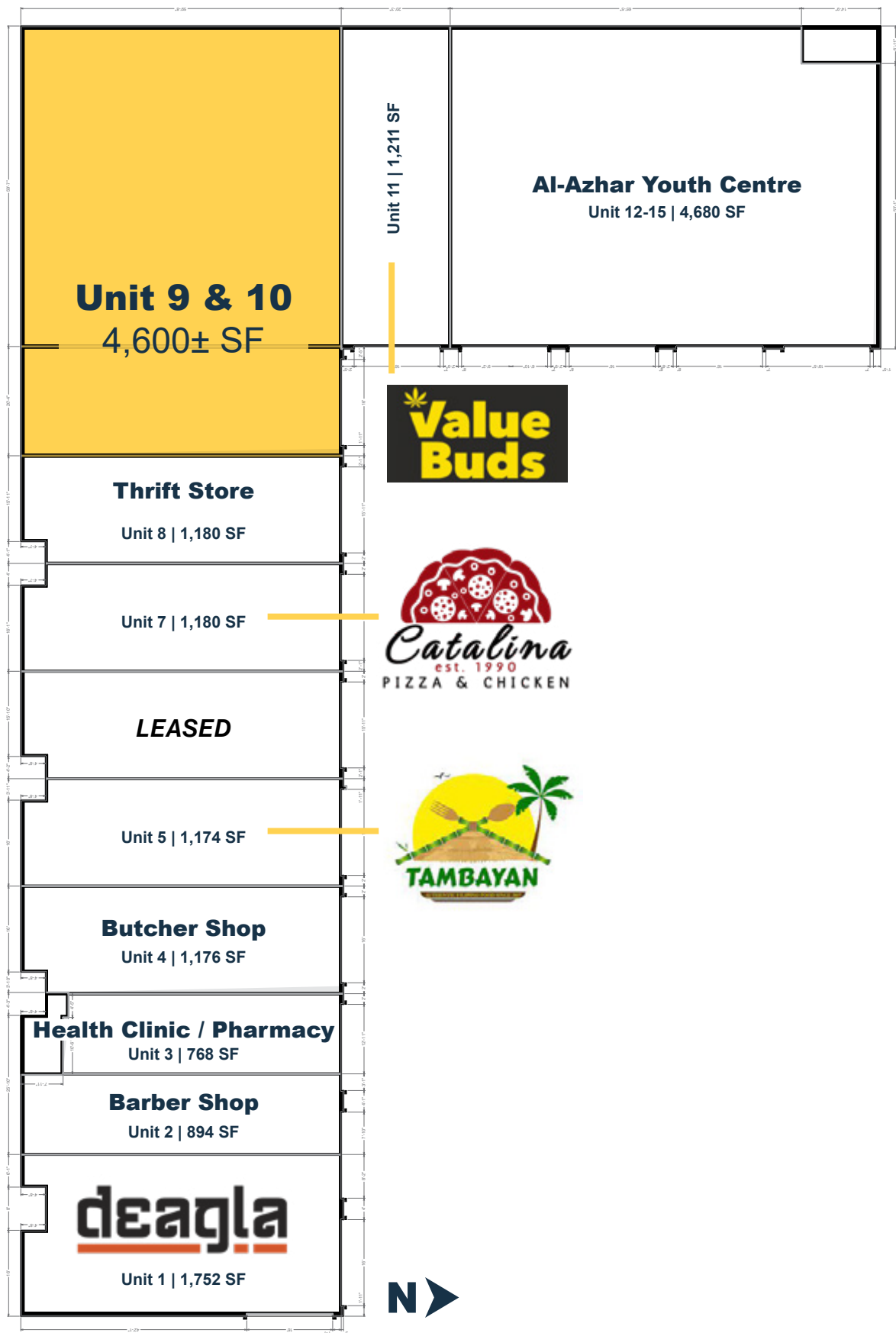
**Op Costs:** \$7.80 PSF (Est. 2025)

**Zoning:** C-COR3 f2.0h12

### Highlights

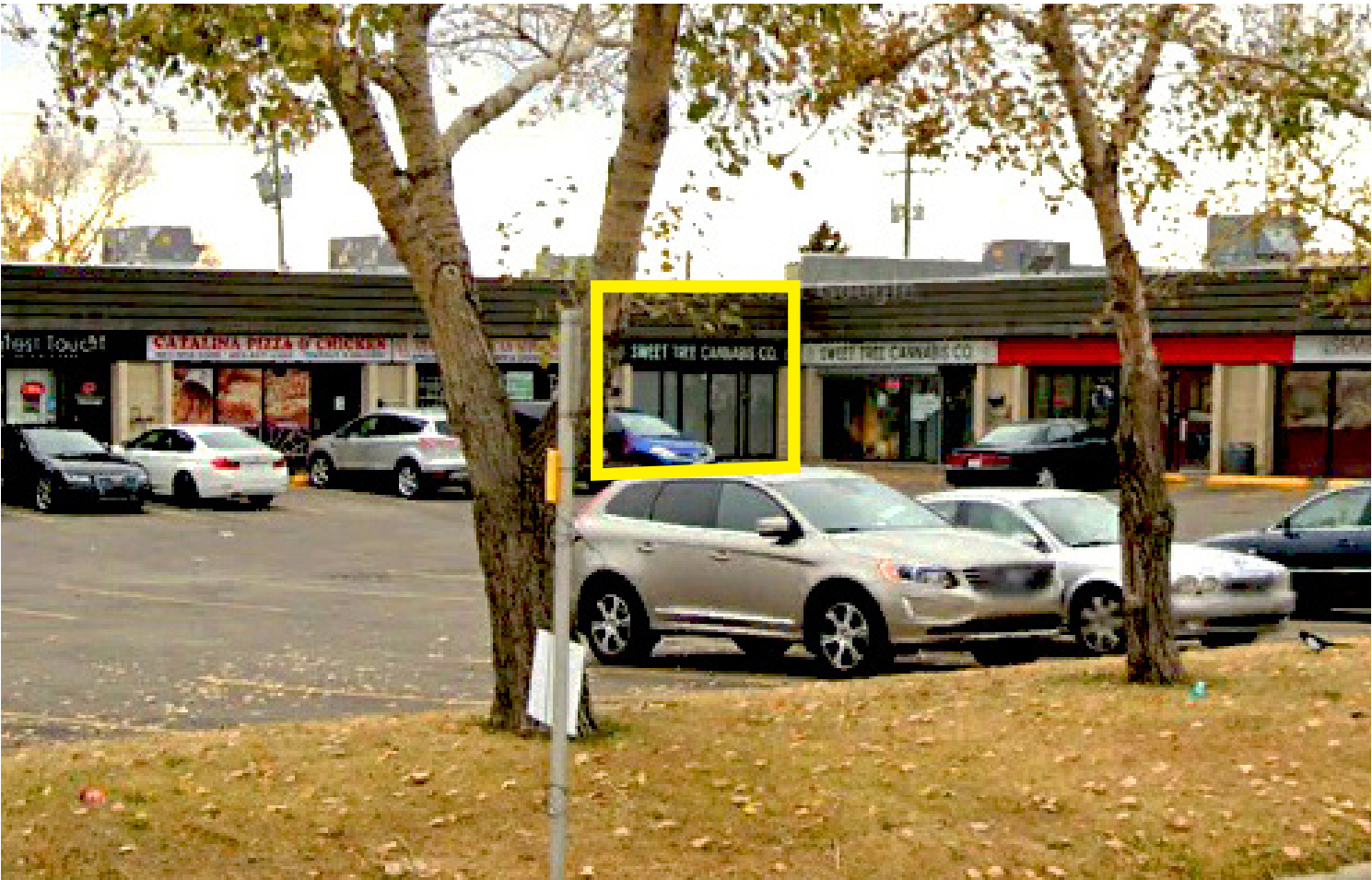
- Convenient Southeast location
- Easy access to Deerfoot Trail, Stoney Trail and Peigan Trail
- Excellent parking
- Numerous amenities nearby, adjacent to a large shopping centre
- Dense residential population within the community
- Pylon signage available

# Site Plan



For Lease

5147 20th Avenue SE | Calgary, AB





View in  
Google Maps

Ernest Morrow  
School

International Ave.

Property  
Location

52nd St. SE

Eliston Park

- |   |  |   |  |
|---|--|---|--|
| 1 |  | 5 |  |
| 2 |  | 6 |  |
| 3 |  | 7 |  |
| 4 |  | 8 |  |

# Thank you for your interest!

For More Info.

**Mahmud Rahman**

P 403.930.8651

E mrahman@blackstonecommercial.com

**Randy Wiens**

P 403.930.8649

E rwiens@blackstonecommercial.com

Unit A210, 9705 Horton Road SW, Calgary, Alberta T2V 2X5 | P 403.214.2344

This document has been prepared by Blackstone Commercial for advertising and general information only. Although information has been obtained from sources deemed reliable, Blackstone Commercial and / or their representatives, brokers or agents make no guarantees, representations or warranties of any kind, expressed or implied, regarding the information including, but not limited to, warranties of content, accuracy and reliability. Blackstone Commercial excludes unequivocally all inferred or implied terms, conditions and warranties arising out of this document and excludes all liability for loss and damages arising therefrom. © 2025, All rights reserved. This document is the copyrighted property of Blackstone Commercial.

[blackstonecommercial.com](https://blackstonecommercial.com)

Follow us:  
Blackstone  
Commercial



**Blackstone**  
Commercial Real Estate Services Inc.